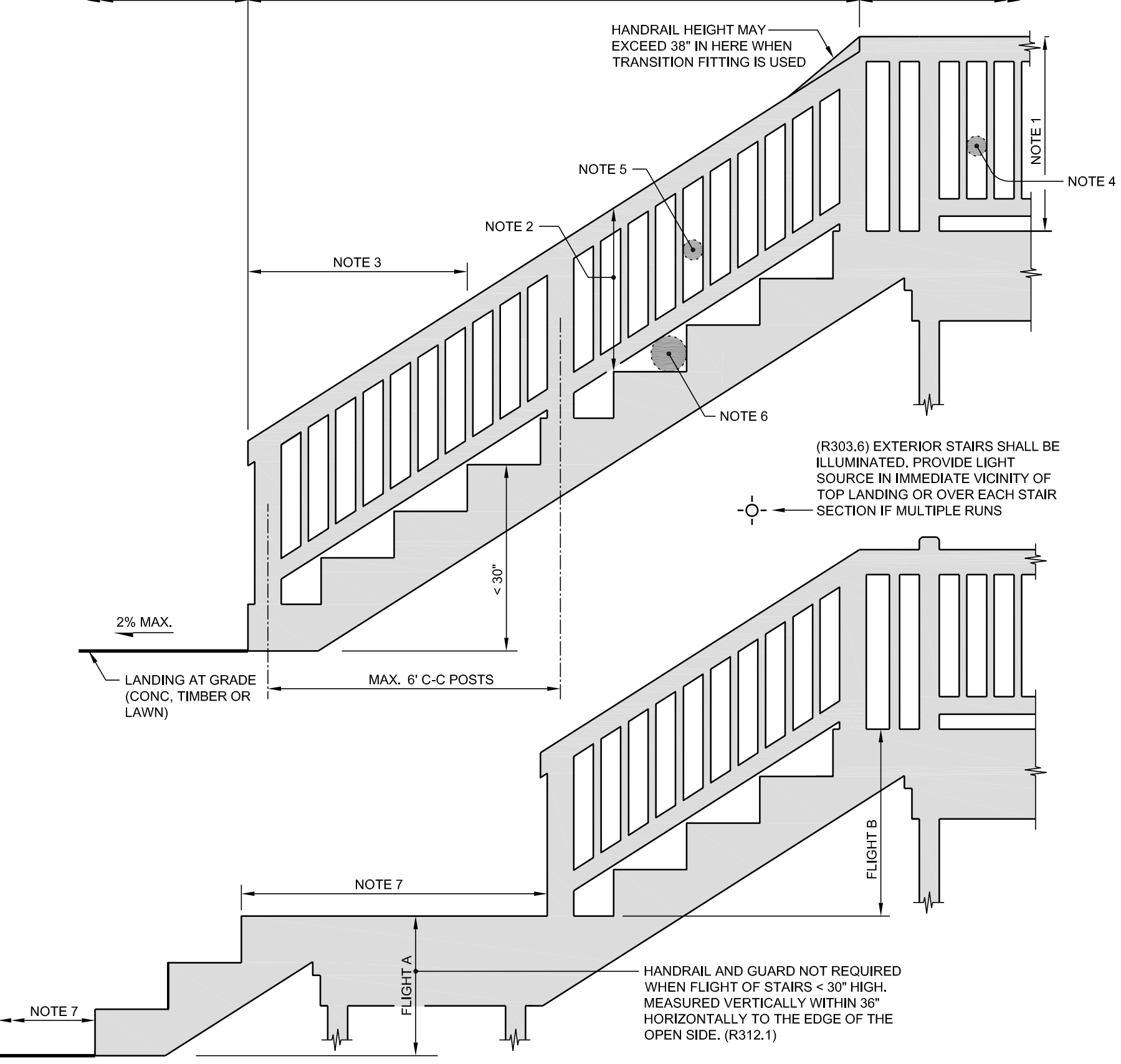
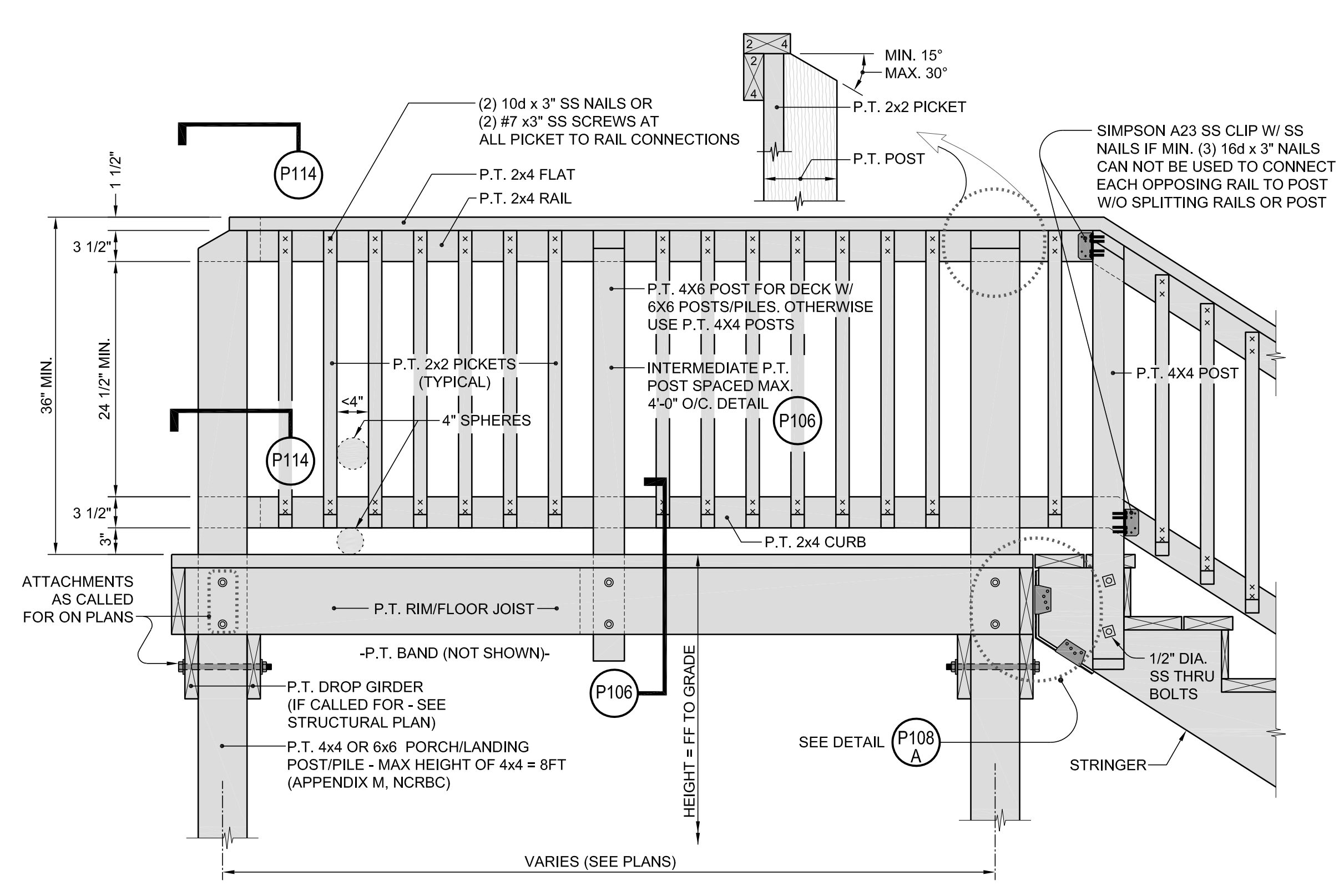


- NOTES:**
1. GUARD HEIGHT 36", (R312.2)
  2. STAIR GUARD HEIGHT 34" AND 38" MEASURED TO LINE CONNECTING TREADS. (R312.2)
  3. STAIR GUARD MUST CONTINUE FOR STAIRS < 30° ABOVE FLOOR BECAUSE STAIRS ARE ON FLIGHT WITH NO LANDING.
  4. GUARD OPENING MUST NOT PASS 4" DIAMETER SPHERE (R312.1).
  5. STAIR GUARD OPENING MUST NOT PASS 4 3/8" DIAMETER SPHERE (R312.3).
  6. INTERSECTION OF BOTTOM RAIL, RISER, AND TREAD MUST NOT PASS 6" DIAMETER SPHERE (R312.3).
  7. FLOOR OR LANDING (MIN 36" MEASURED IN DIRECTION OF TRAVEL) IS REQUIRED AT THE TOP AND BOTTOM OF EACH STAIRWAY. WIDTH OF LANDING SHALL NOT BE LESS THAN WIDTH OF STAIRWAY SERVED.
  8. HANDRAILS SHALL BE CONTINUOUS FOR FULL LENGTH OF THE FLIGHT FROM A POINT DIRECTLY ABOVE THE TOP RISER TO A POINT DIRECTLY ABOVE THE LOWEST RISER OF THE FLIGHT. HANDRAILS SHALL BE RETURNED OR SHALL TERMINATE AT A NEWEL POST SAFETY TERMINATE (R311.7.2.2).

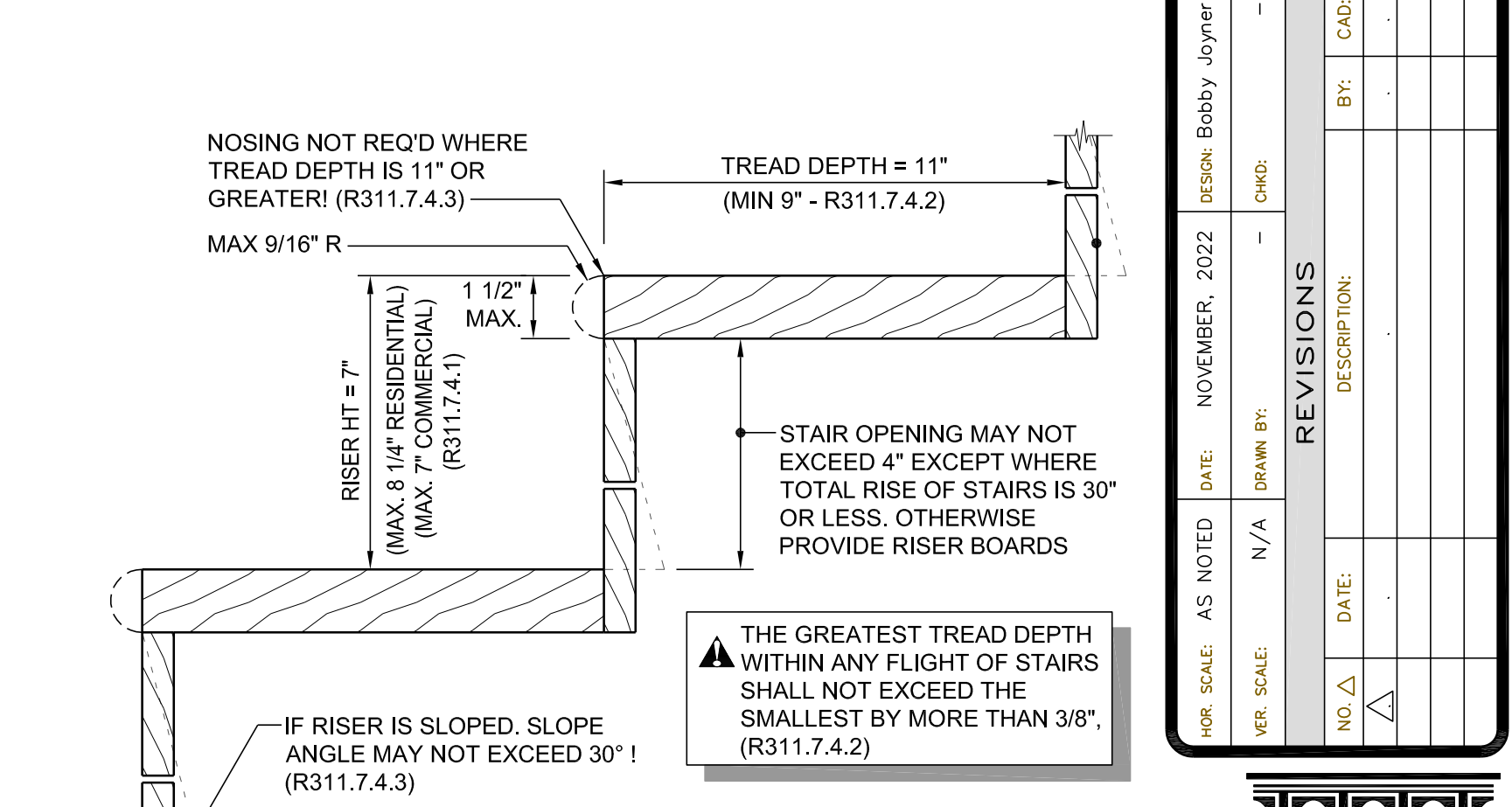
TWO OR MORE HANDRAILS ARE CONSIDERED CONTINUOUS IF THE TERMINATION OF THE RAIL OCCURS WITHIN 6" OF EACH OTHER.



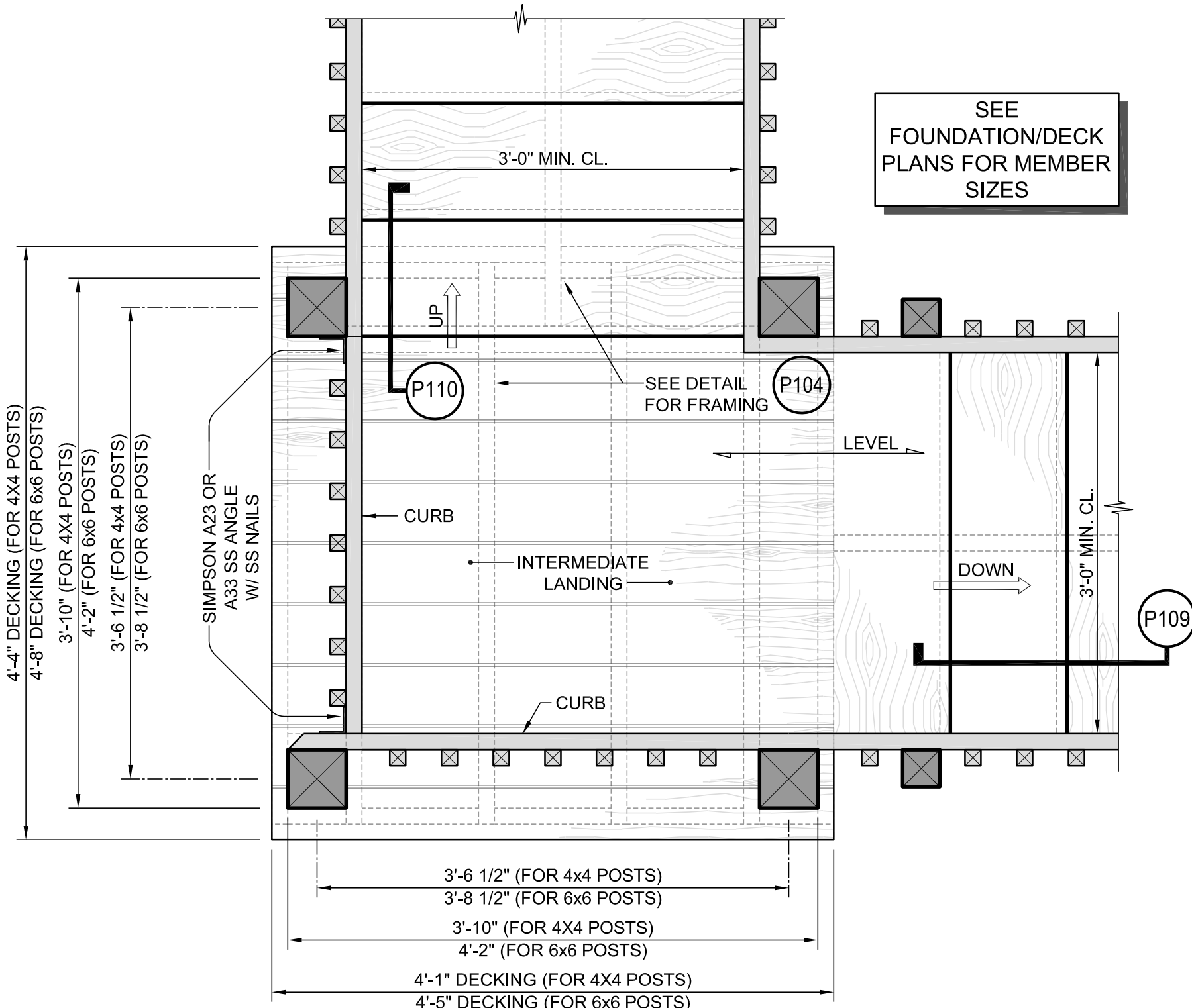
**P101 STAIR GUARDS SCHEMATIC**  
NOT TO SCALE  
Details Developed By APPIAN Consulting Engineers  
DATE: 12-15-14



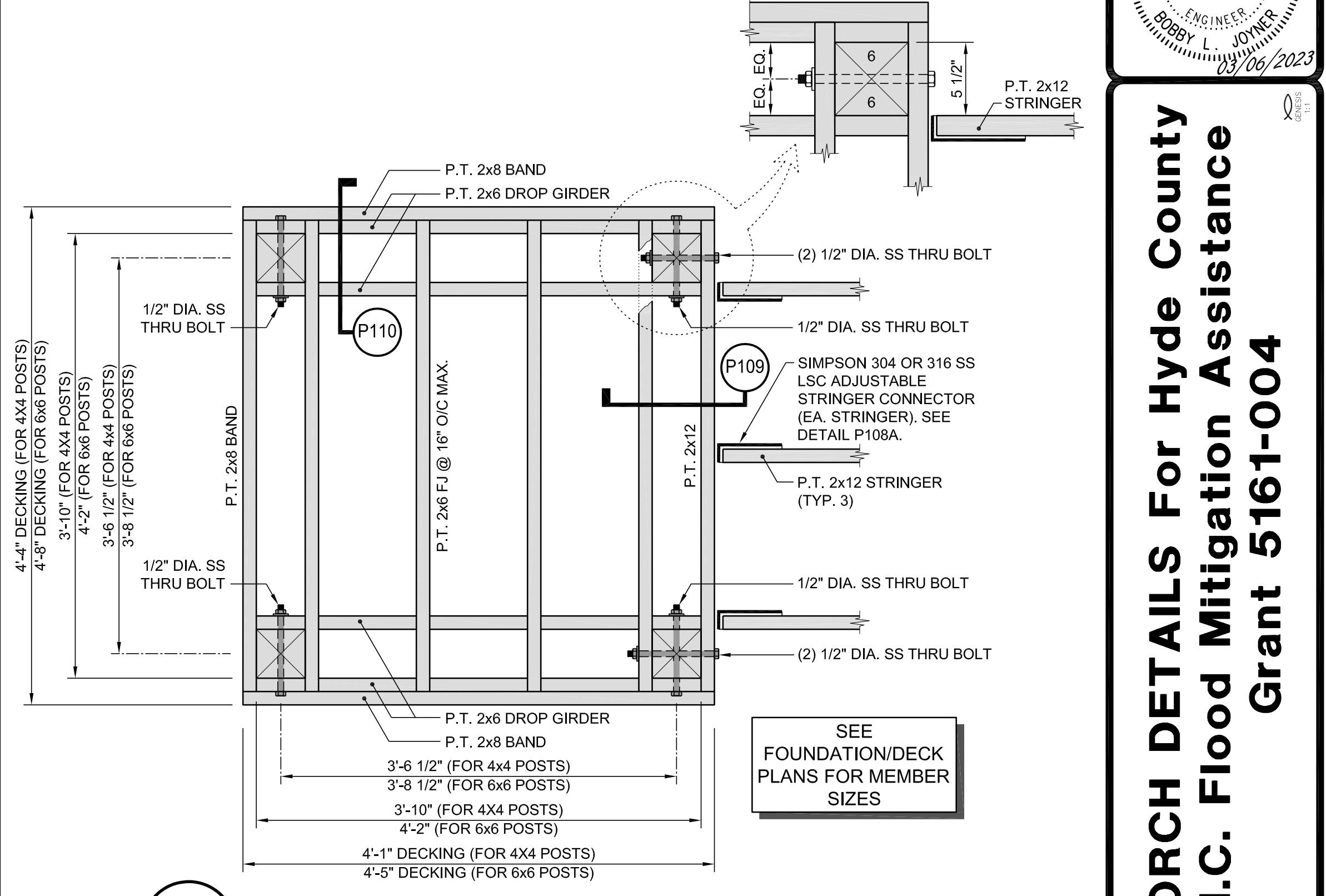
**P102 TYPICAL FRONT PORCH ELEVATION**  
SCALE: 1" = 1'-0"  
Details Developed By APPIAN Consulting Engineers  
DATE: 11-28-16



**P105 STAIR DETAILS**  
SCALE: 3/4" = 1'-0"  
Details Developed By APPIAN Consulting Engineers  
DATE: 12-15-14



**P103 FLOOR/RAIL PLAN FOR INTERMEDIATE TURNING LANDING**  
SCALE: 1" = 1'-0"  
Details Developed By APPIAN Consulting Engineers  
DATE: 11-28-16



**P104 FRAMING FOR INTERMEDIATE TURNING LANDING**  
SCALE: 1" = 1'-0"  
Details Developed By APPIAN Consulting Engineers  
DATE: 11-28-16

NO.	DATE	DESCRIPTION	BY	CHKD.
1	NOVEMBER, 2022	DESIGN	Robby Joyner	

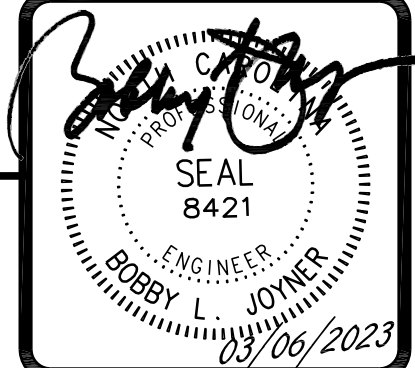


CONSULTING ENGINEERS, P.A.  
CIVIL, MUNICIPAL &  
STRUCTURAL ENGINEERS  
COMPREHENSIVE  
ENVIRONMENTAL SERVICES  
BLN = C0562

154 Roundabout Ct.  
Rocky Mount, N.C. 27804  
Phone: (252) 972-7703  
Fax: (252) 972-7638

www.applanengineers.com  
admin@applanengineers.com

Final Drawings  
Review Purposes ONLY



**PORCH DETAILS For Hyde County  
N.C. Flood Mitigation Assistance  
Grant 5161-004**