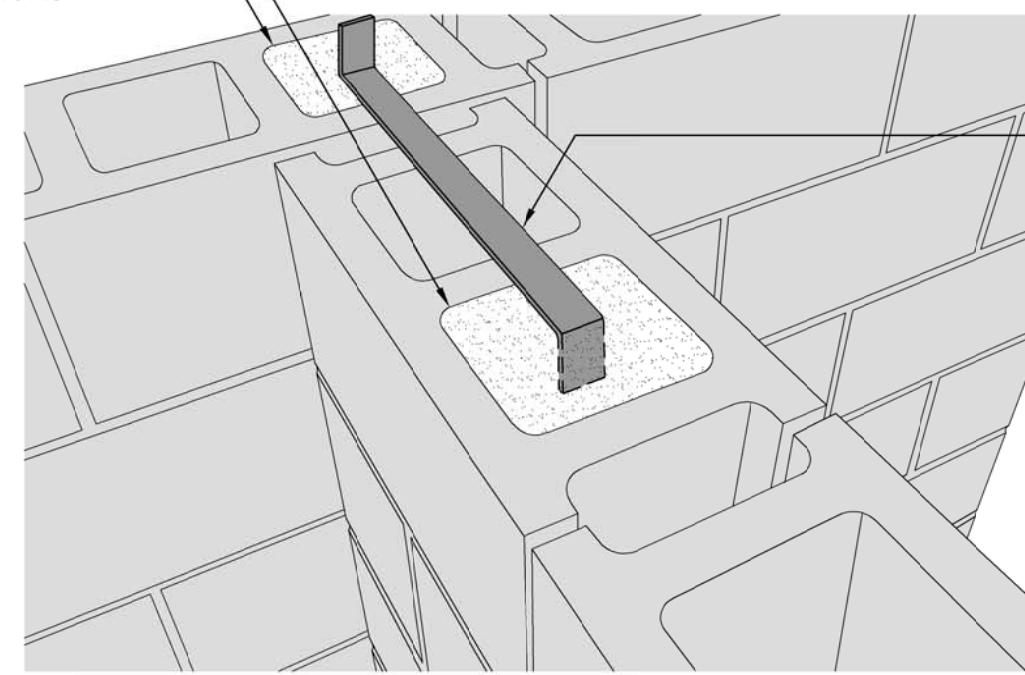
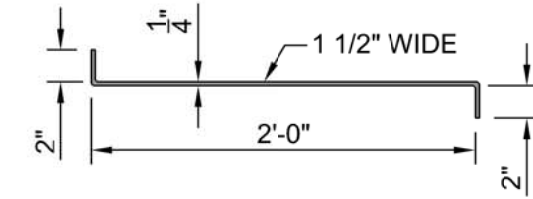


SOLID GROUT ABOVE AND BELOW ANCHORS

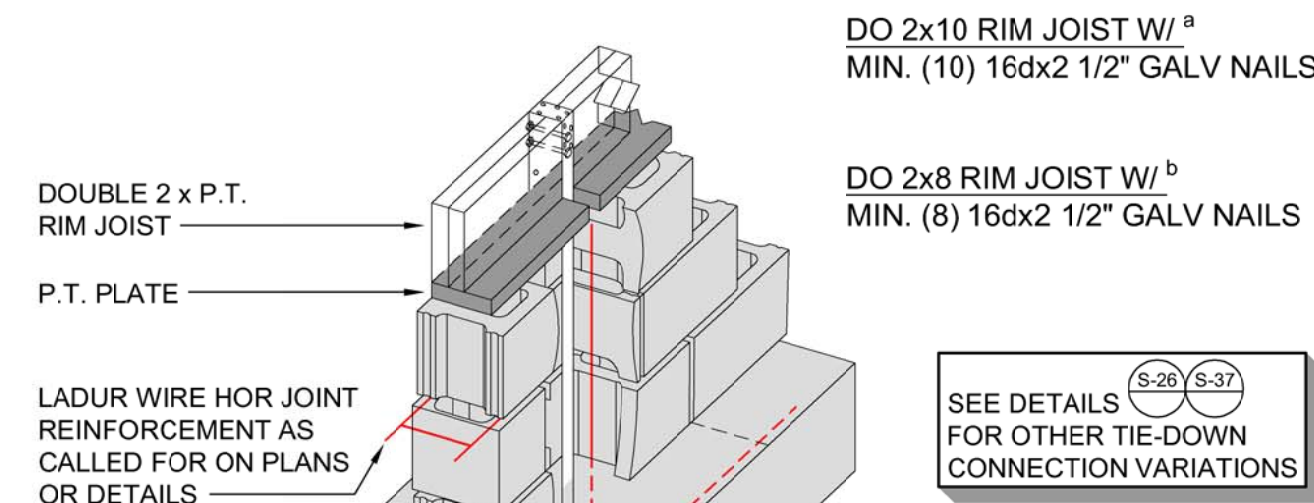


HOHMANN & BARNARD 344 (DUROWALL DA310) GALV. RIGID PARTITION ANCHOR @ 32" O/C VERTICAL (STAINLESS STEEL TYPE 316 COASTAL AREAS)



NOTES:
1. FOR 12" WALLS, USE 2 @ 32" O/C

S-23 TYING INTERSECTING CMU WALLS
NOT TO SCALE DATE: 9-30-15
Details Developed By APPIAN Consulting Engineers



S-24 SIMPSON PA51 OR PA68

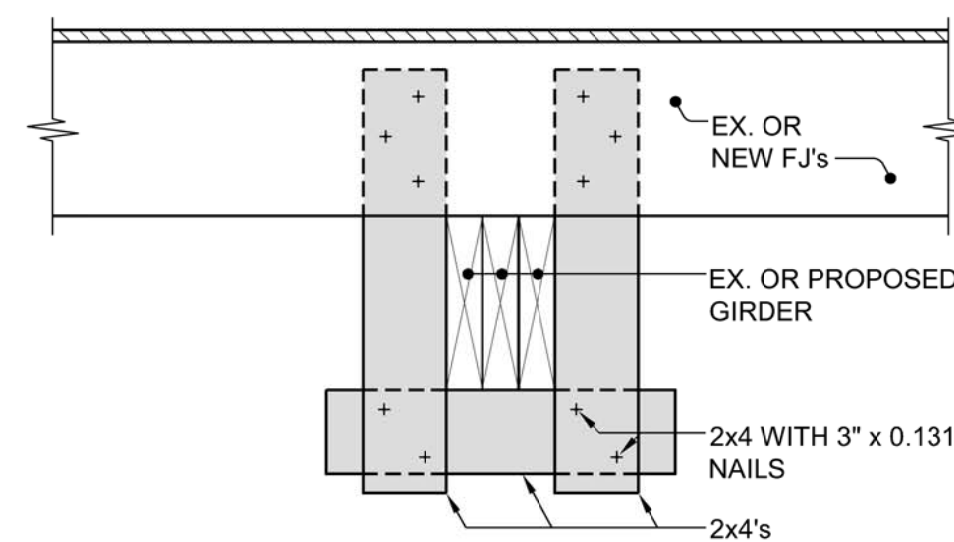
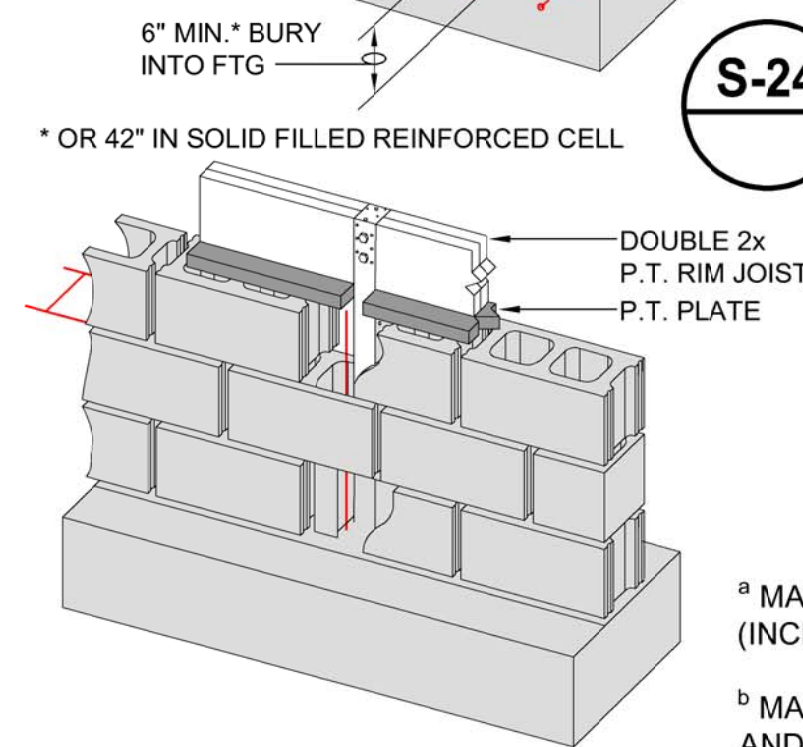
INSTALLATION

▲ UNLESS NOTED OTHERWISE SPACING OF PA51/PA68 TO MATCH REINFORCED VERT CELL SPACING BUT NO MORE THAN 32" O/C

^a MAX UL = 1690# / STRAP (INCL 133% INC FOR WIND)

^b MAX UL = 1590# / NAIL OPTION AND 1115# W/ BOLT OPTION

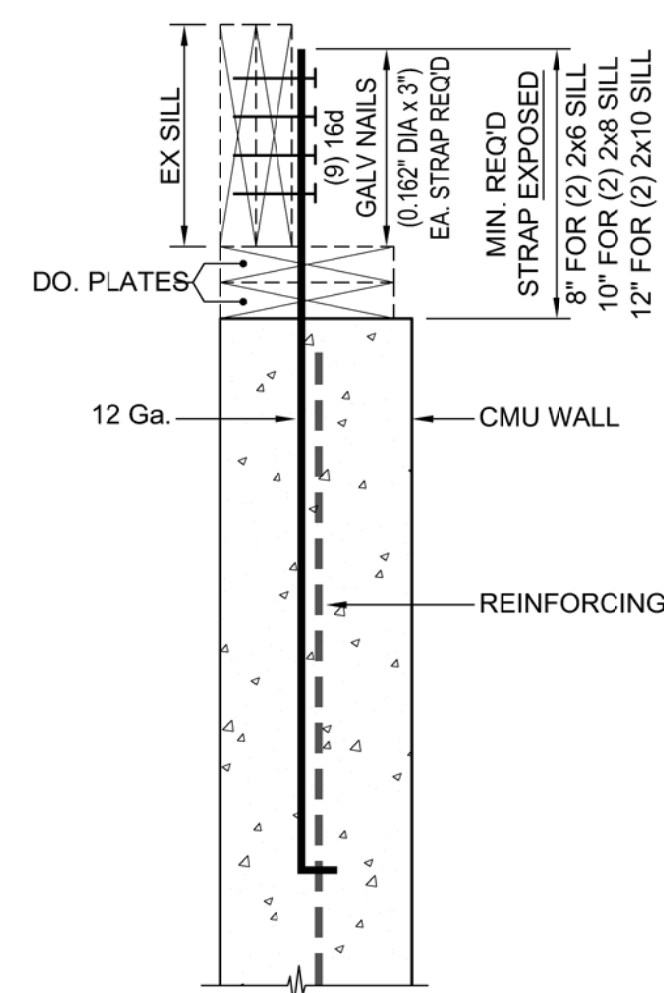
SUPPORT DETAILS	
S-26	CONNECTING STRAPS TO SILL
S-37	TIE-DOWN STRAPPING CONFIGURATIONS



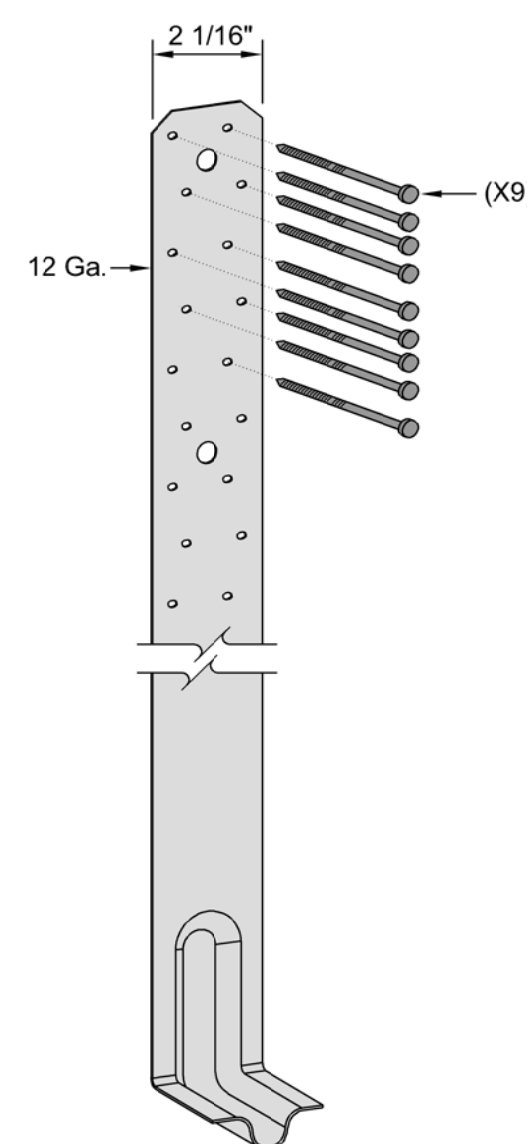
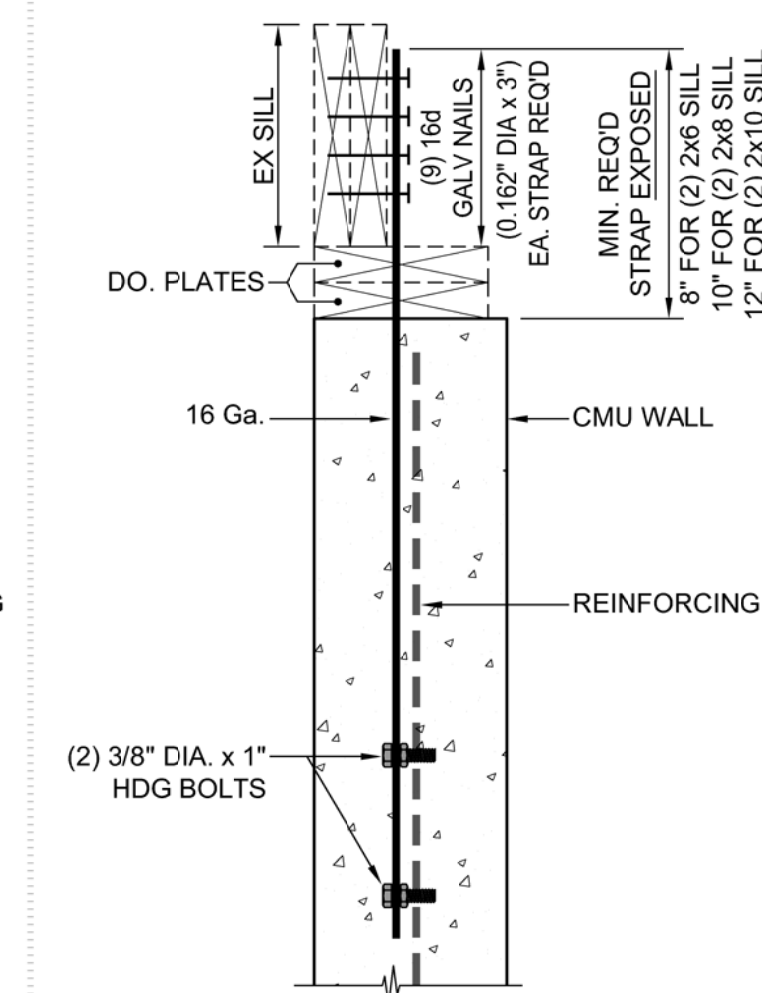
S-25 METHOD OF TEMPORARILY SUPPORTING / HANGING A DROP GIRDER

SCALE: 1 1/2" = 1'-0" DATE: 9-30-15
Details Developed By APPIAN Consulting Engineers

SIMPSON PA51 or PA68
(2 1/16" x 12 Ga.)



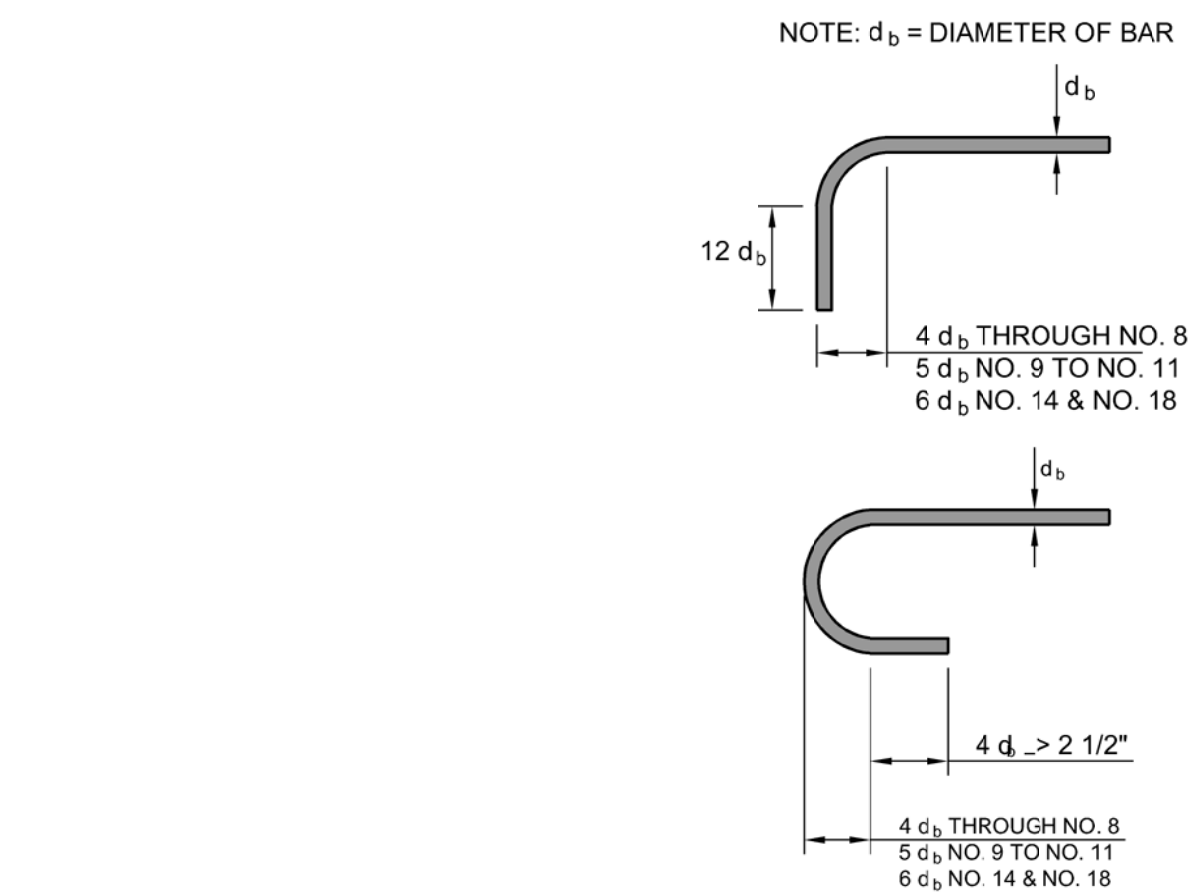
SIMPSON MSTC40 or MSTC52
(3" x 16 Ga.)



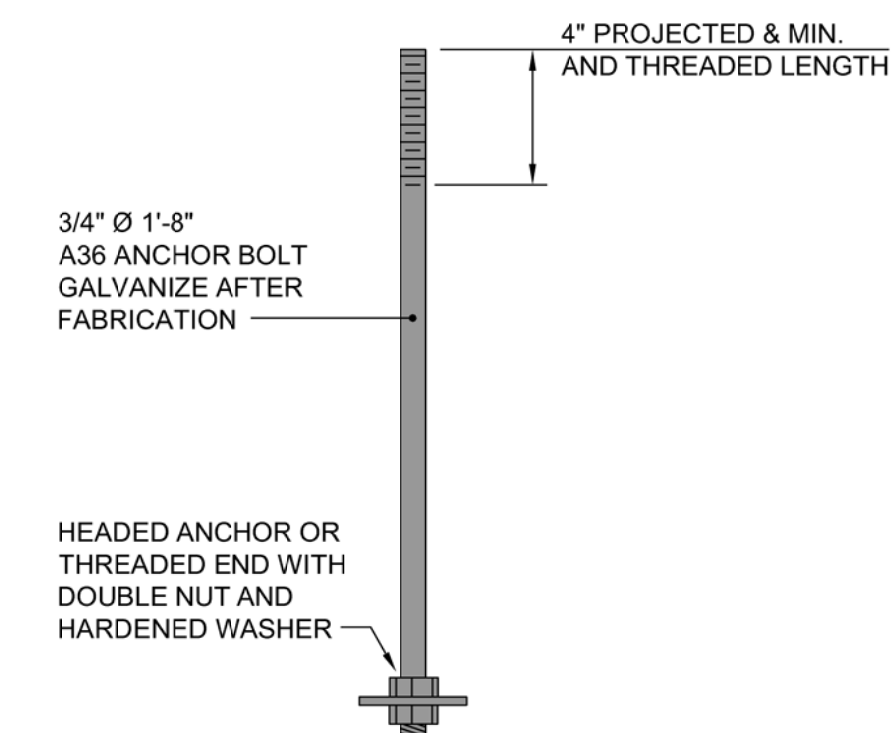
1. EITHER STRAP MAY BE USED WHEN INSTALLED AS SHOWN ABOVE.
2. STRAPS MAY NOT BE SPLICED.
3. IF EXPOSURE FALLS SHORT, INSTALL NEW STRIP IN ADJACENT CELL & FILL SOLID - NO EXCEPTIONS! IT IS BETTER TO HAVE EXPOSURE LONGER & CUT STRAP THAN TO HAVE TO CONSTRUCT NEW ADJACENT TIE-DOWN!

S-26 CONNECTING STRAPS TO SILL
NOT TO SCALE (Details Developed By APPIAN Consulting Engineers) DATE: 7-31-18

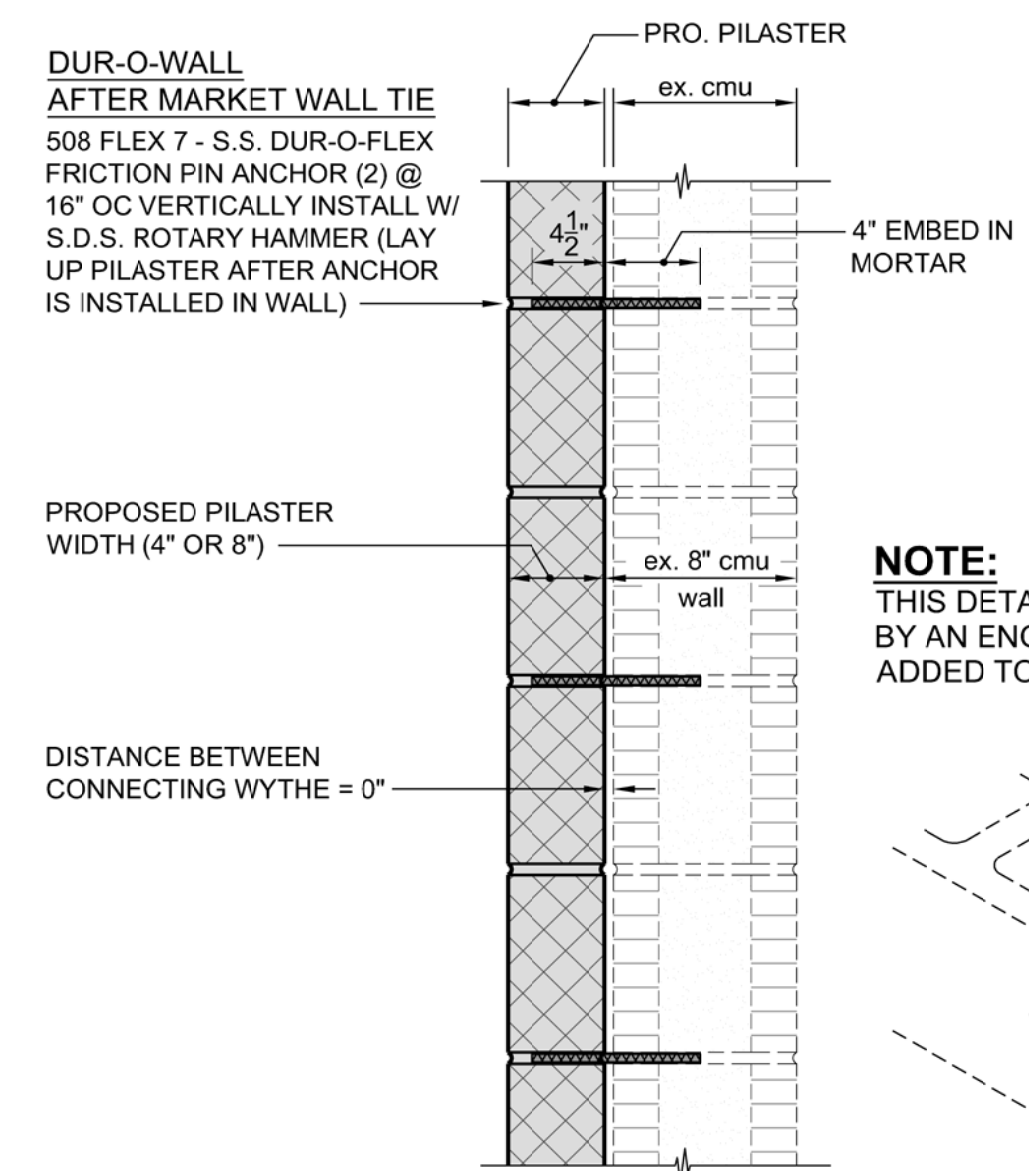
* NOTE SEE DETAIL S-37 FOR ACCEPTABLE STRAPPING CONFIGURATION



S-27 STANDARD HOOKS
NOT TO SCALE DATE: 10-20-15
Details Developed By APPIAN Consulting Engineers



TYP. ANCHOR ROD DETAIL
S-28 CAST-IN PLACE
NOT TO SCALE DATE: 10-20-15
Details Developed By APPIAN Consulting Engineers



NOTE:
THIS DETAIL TO BE USED WHEN DIRECTED BY AN ENGINEER WHEN PILASTERS ARE ADDED TO AN EXISTING WALL

S-30 RETROFITTING A PILASTER

SCALE: 1 1/2" = 1'-0" DATE: 6-7-17
Details Developed By APPIAN Consulting Engineers
USE THIS DETAIL ONLY WHEN DIRECTED BY ENGINEER OTHERWISE USE DETAIL S-20 FOR BONDING PILASTERS

REV. NO.	DATE	DESCRIPTION	BY	CHK.
1	NOVEMBER, 2022		Bobby Joyner	



CONSULTING ENGINEERS, P.A.
CIVIL, MUNICIPAL & STRUCTURAL ENGINEERS
COMPREHENSIVE ENVIRONMENTAL SERVICES
BLN = C0562

154 Roundabout Ct.
Rocky Mount, N.C. 27804
Phone: (252) 972-7703
Fax: (252) 972-7638

www.applanengineers.com
admin@applanengineers.com

Final Drawings
Review Purposes ONLY



STANDARD DETAILS For Hyde County N.C. Flood Mitigation Assistance Grant 5161-004