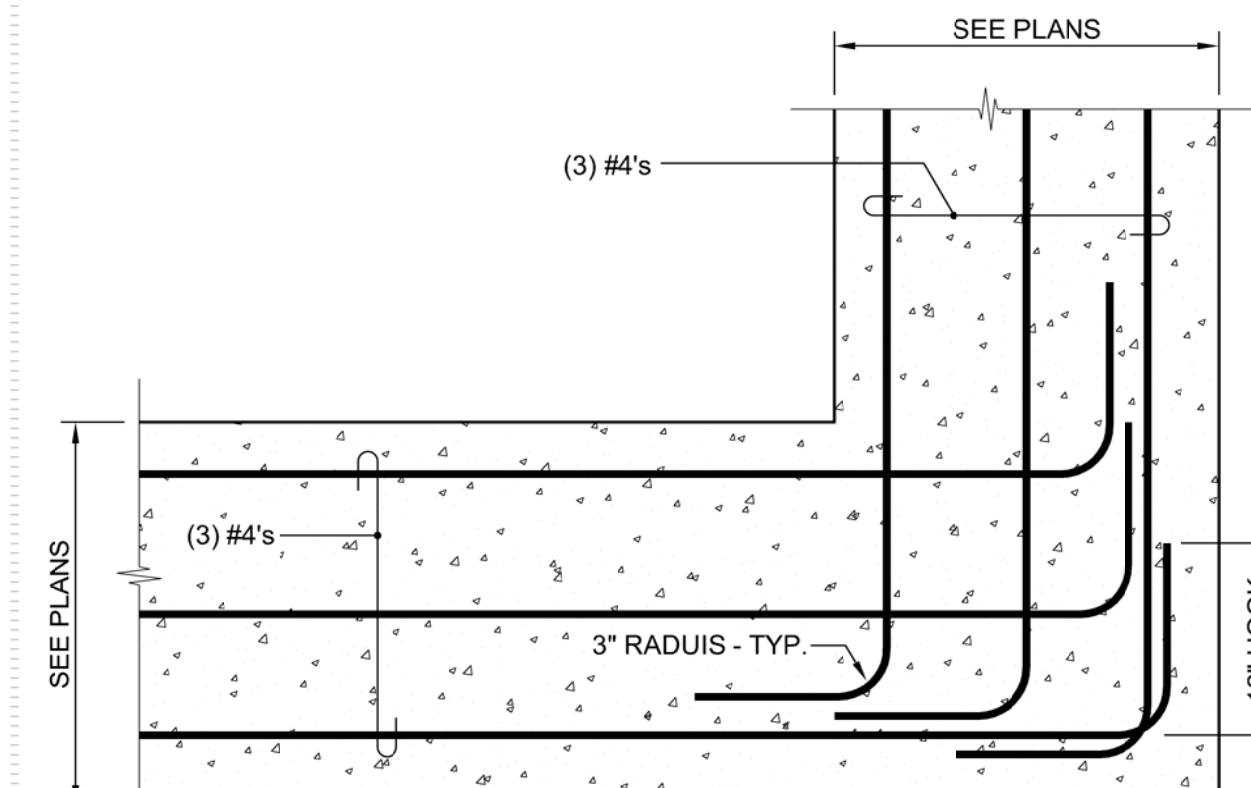


**S-56 A** **LONGITUDINAL FOOTING REINFORCEMENT LAYOUT AT CORNERS / TEES**

NOT TO SCALE REV: 8-29-18  
Details Developed By APPIAN Consulting Engineers



**S-56 B** **FOOTING REINFORCEMENT at FOOTING CORNERS (EQUAL FOOTING WIDTH)**

NOT TO SCALE REV: 12-2-19  
Details Developed By APPIAN Consulting Engineers

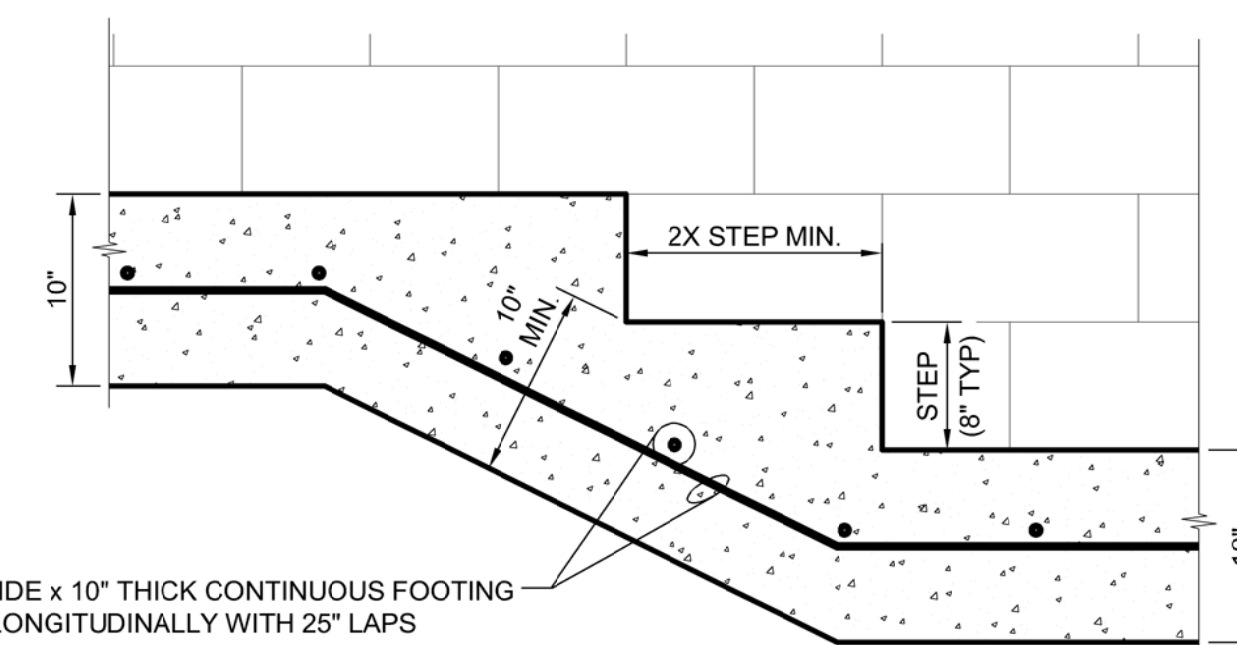
|       |      |           |             |
|-------|------|-----------|-------------|
| NO. Δ | DATE | REVISIONS | DESCRIPTION |
|       |      |           |             |
|       |      |           |             |
|       |      |           |             |
|       |      |           |             |



CONSULTING ENGINEERS, P.A.  
CIVIL, MUNICIPAL &  
STRUCTURAL ENGINEERS  
COMPREHENSIVE  
ENVIRONMENTAL SERVICES  
BLN = C0562

154 Roundabout Ct.  
Rocky Mount, N.C. 27804  
Phone: (252) 972-7703  
Fax: (252) 972-7638

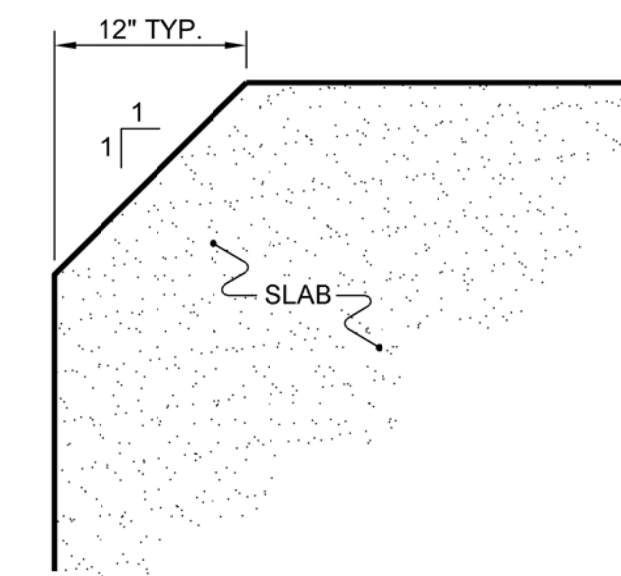
www.applanengineers.com  
admin@applanengineers.com



**S-57** **STEPPED FOOTING ELEVATION**

NOT TO SCALE REV: 12-2-19  
Details Developed By APPIAN Consulting Engineers

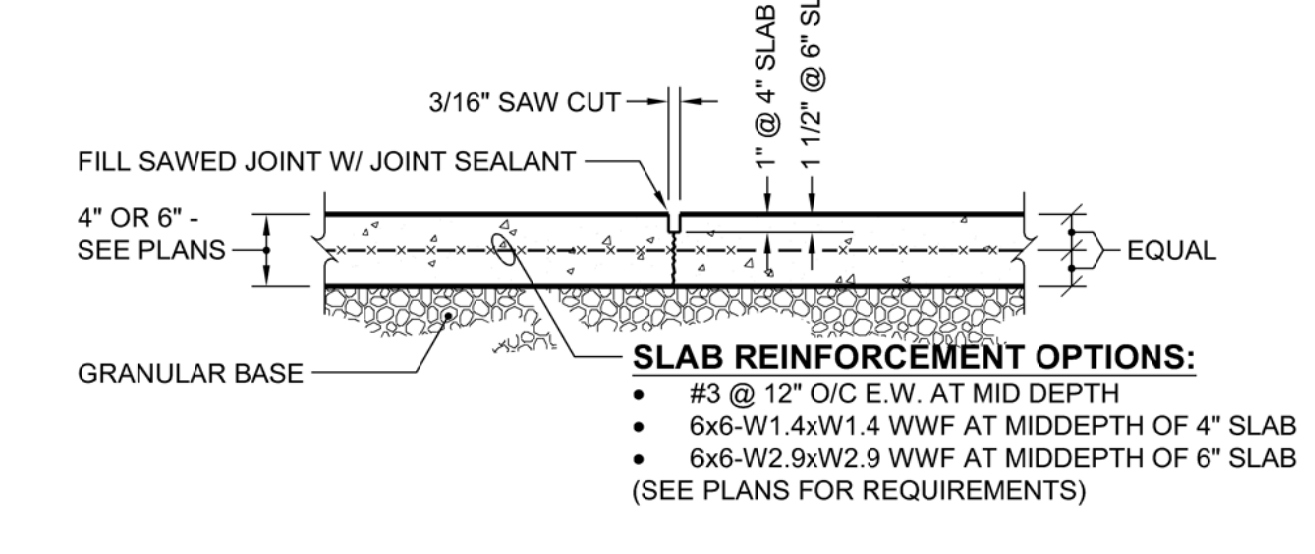
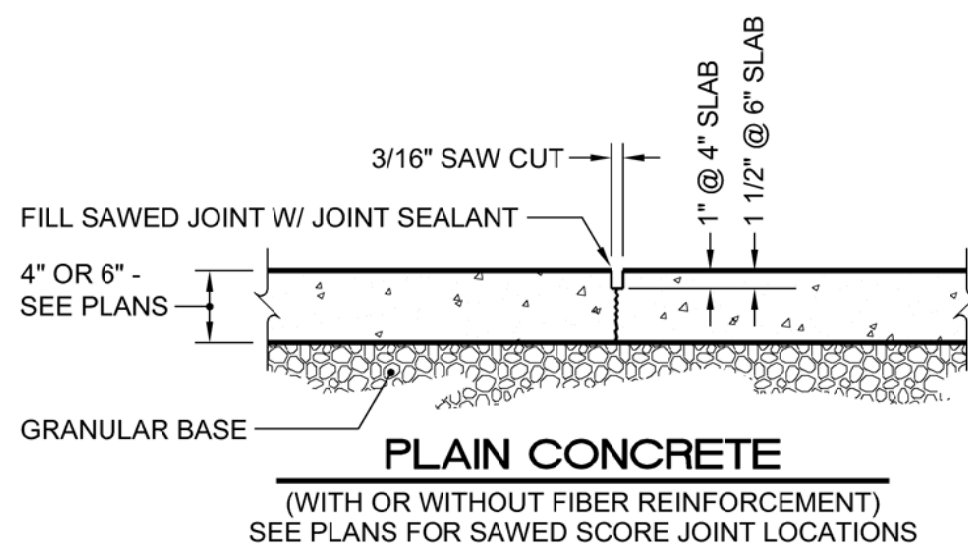
2'-0" WIDE x 10" THICK CONTINUOUS FOOTING  
(3) #4 LONGITUDINALLY WITH 25" LAPS  
#3 @ 48" O.C. AT BOTTOM (STAGGER  
ADJACENT LAPS A MINIMUM OF 48")



**S-59** **TYPICAL CONCRETE CORNER DETAIL PLAN VIEW**

NOT TO SCALE REV: 12-2-19  
Details Developed By APPIAN Consulting Engineers

Final Drawings  
Review Purposes ONLY



**S-58** **TYPICAL SLAB CRACK CONTROL JOINT DETAIL "SJ"**

NOT TO SCALE REV: 12-2-19  
Details Developed By APPIAN Consulting Engineers

- NOTES:**
- SAW JOINT SHALL BE MADE AS SOON AS CONCRETE HAS GAINED SUFFICIENT STRENGTH TO RETAIN AGGREGATE AGAINST THE SAWING ACTION
  - U.N.O., FOR MOST CONVENTIONAL SLABS ON GRADE, THE STEEL DOES NOT HAVE TO BE DISCONTINUOUS AT CONTRACTION OR SAWN CONTROL JOINTS.
  - SEE PLANS FOR SAWED SCORE JOINT (SJ) LOCATIONS.

**STANDARD DETAILS For Hyde County N.C. Flood Mitigation Assistance Grant 5161-004**