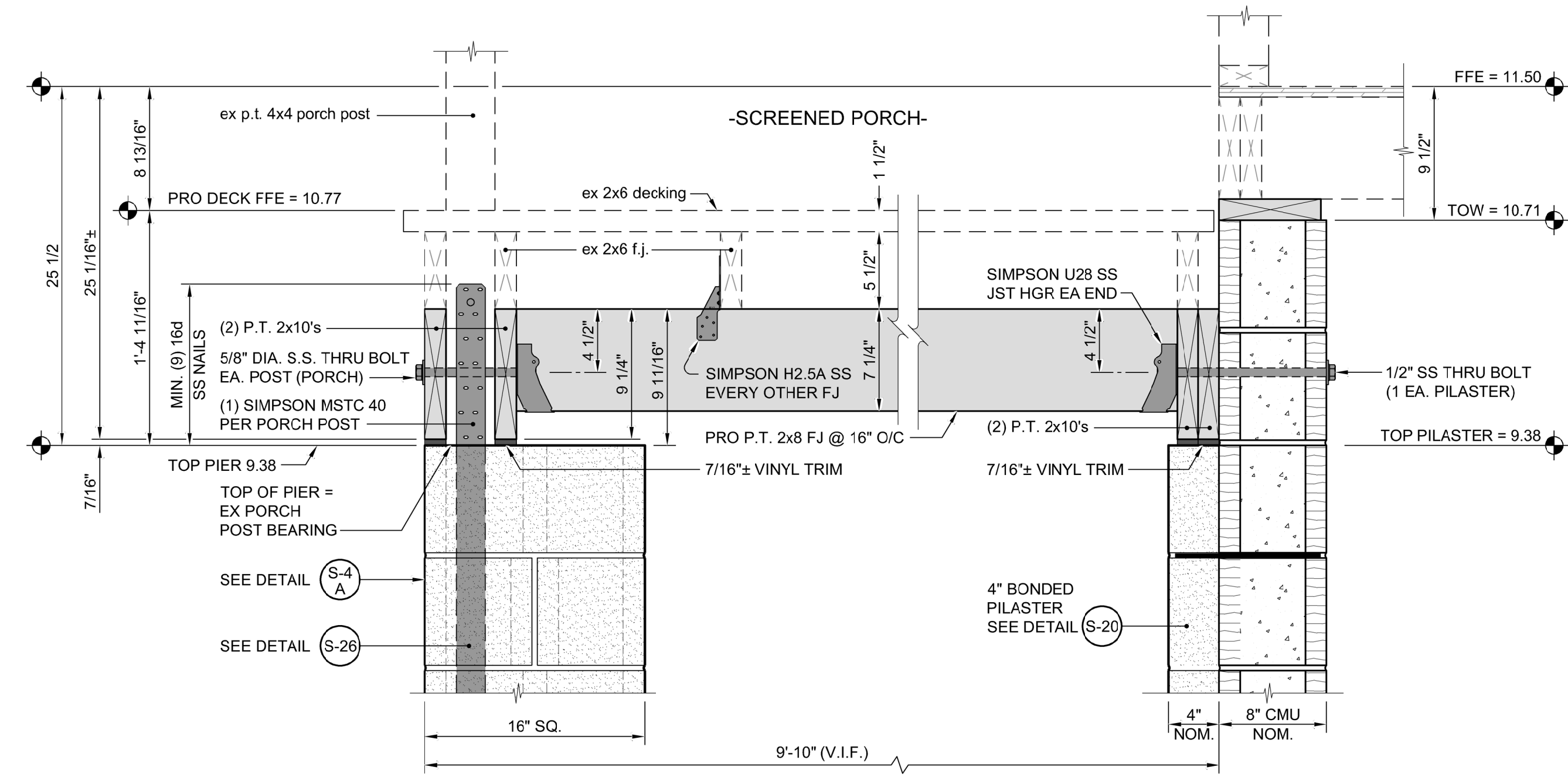
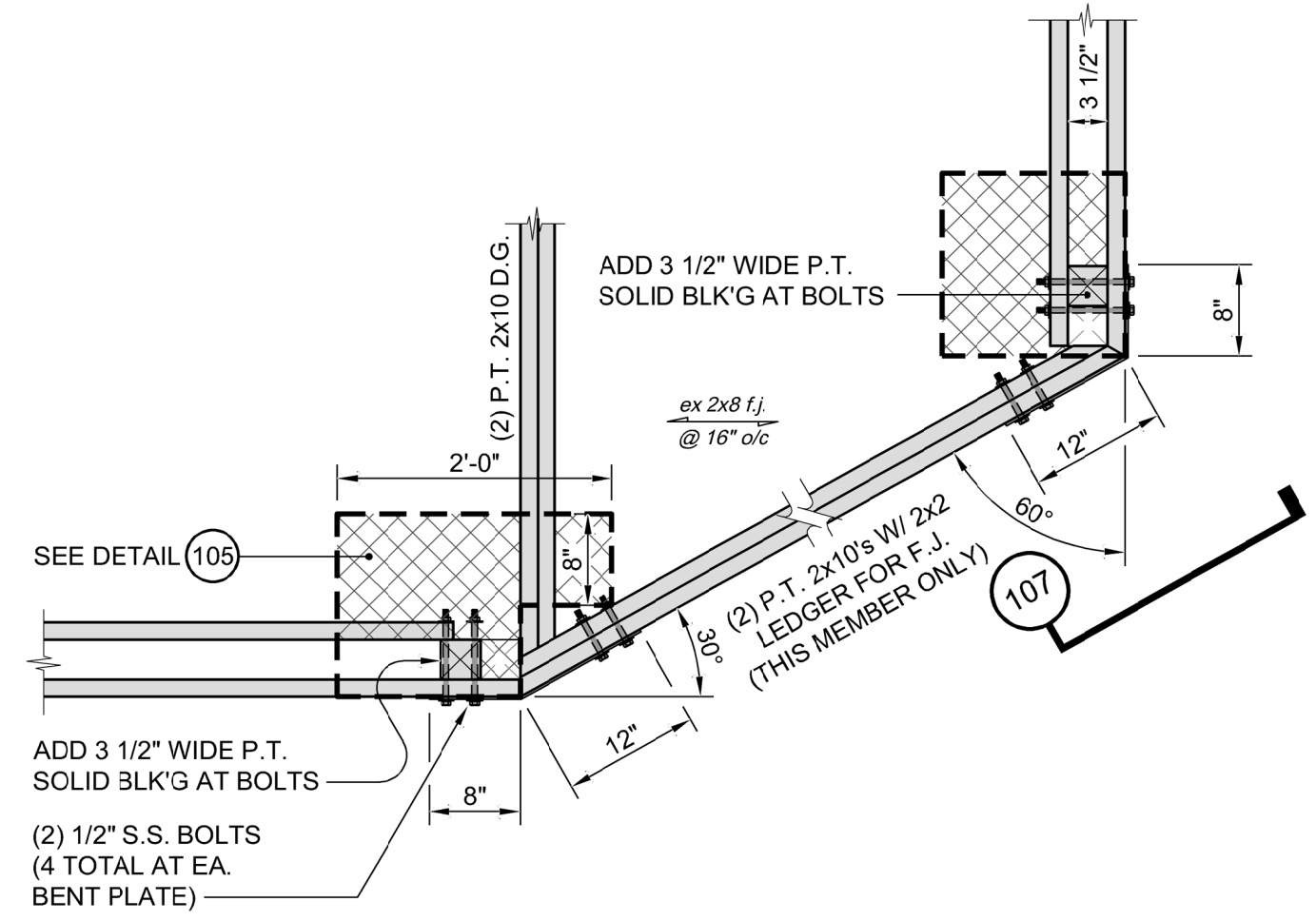


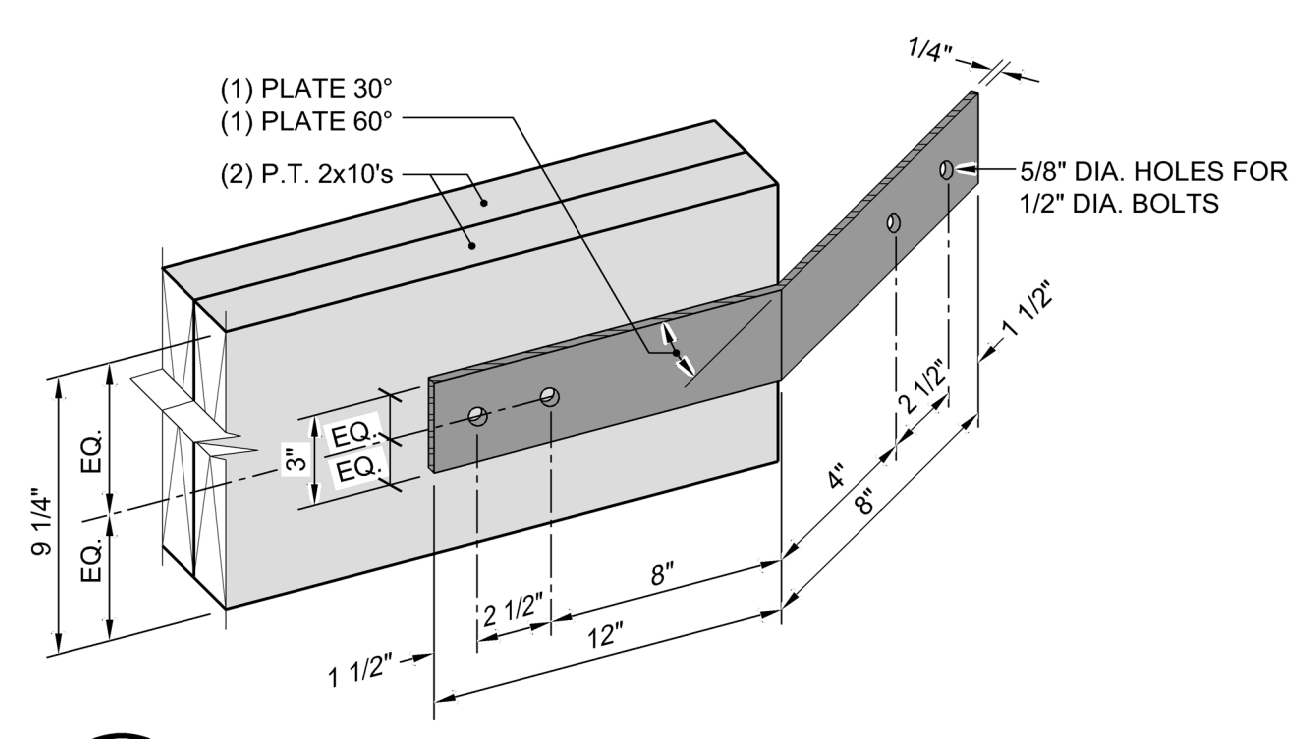
104 SECTION at 2x6 FJ FRAMING
 SCALE: 1/2" = 1'-0"
 Details Developed By APPIAN Consulting Engineers
 DATE: 1/16/23



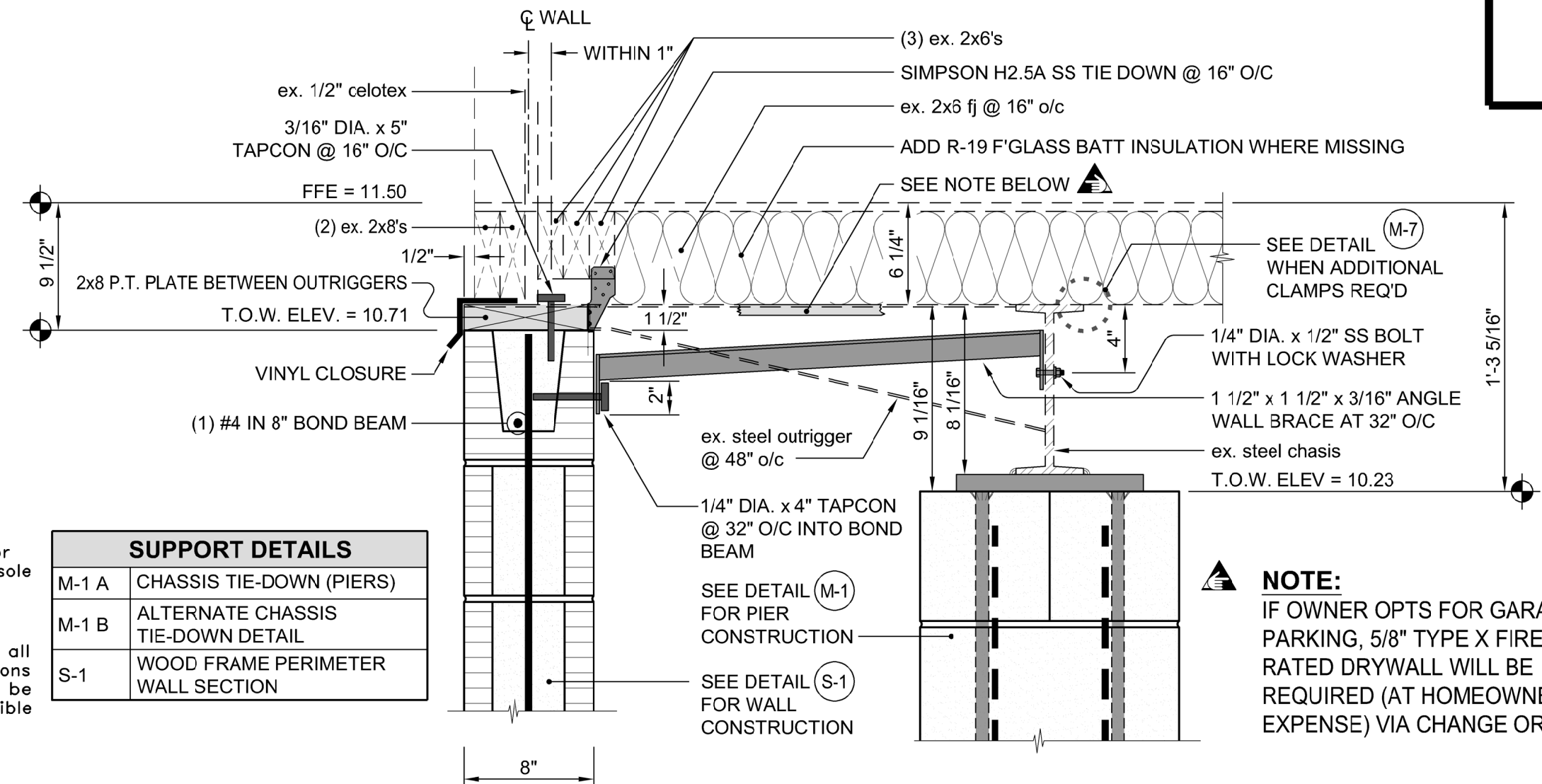
105 FRONT PORCH FLOOR CARRIAGE FRAMING
 SCALE: 1 1/2" = 1'-0"
 Details Developed By APPIAN Consulting Engineers
 DATE: 1-16-23



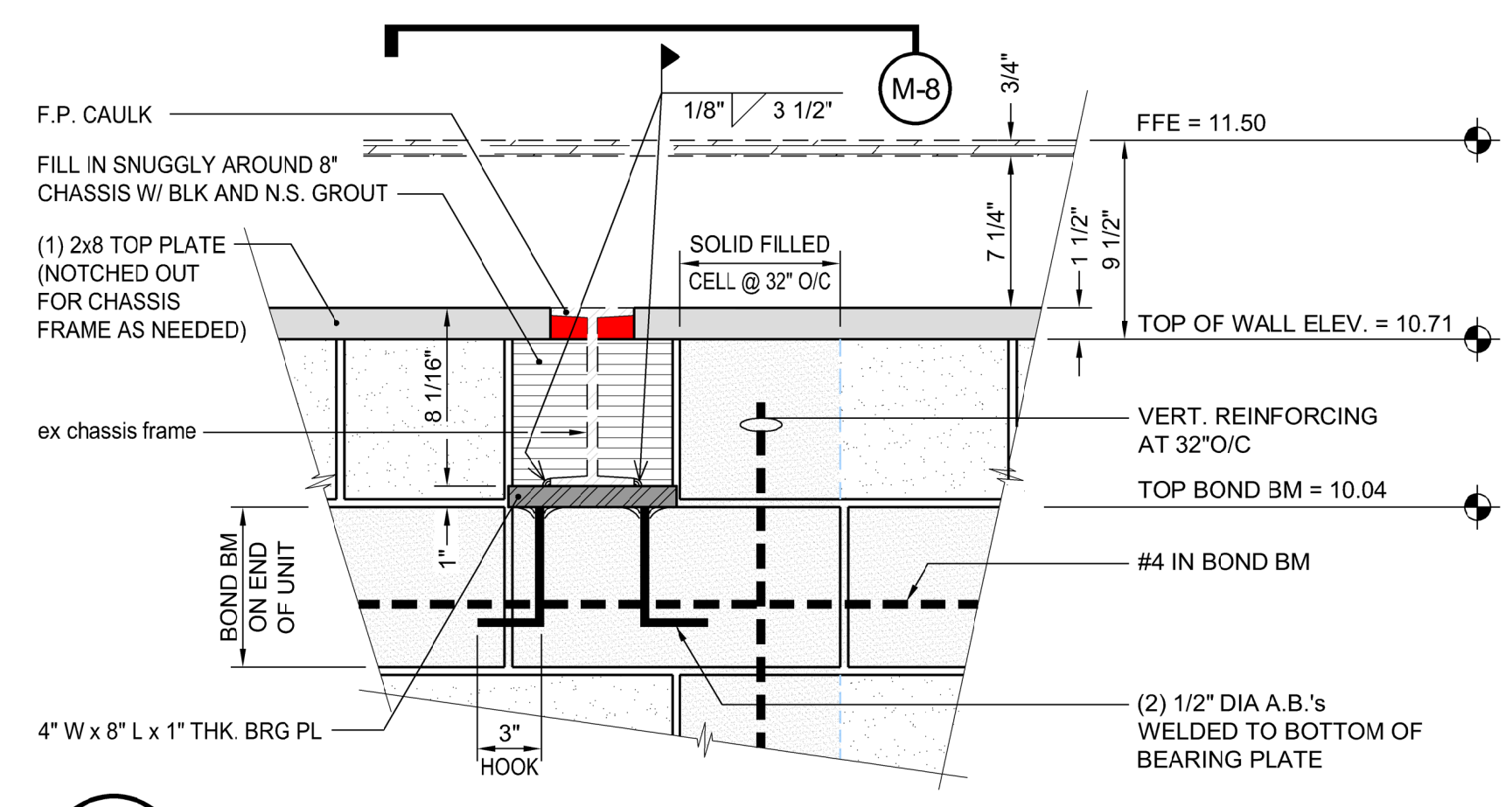
106 FRONT BAND SILL at DECK
 SCALE: 3/4" = 1'-0"
 Details Developed By APPIAN Consulting Engineers
 DATE: 1/16/23



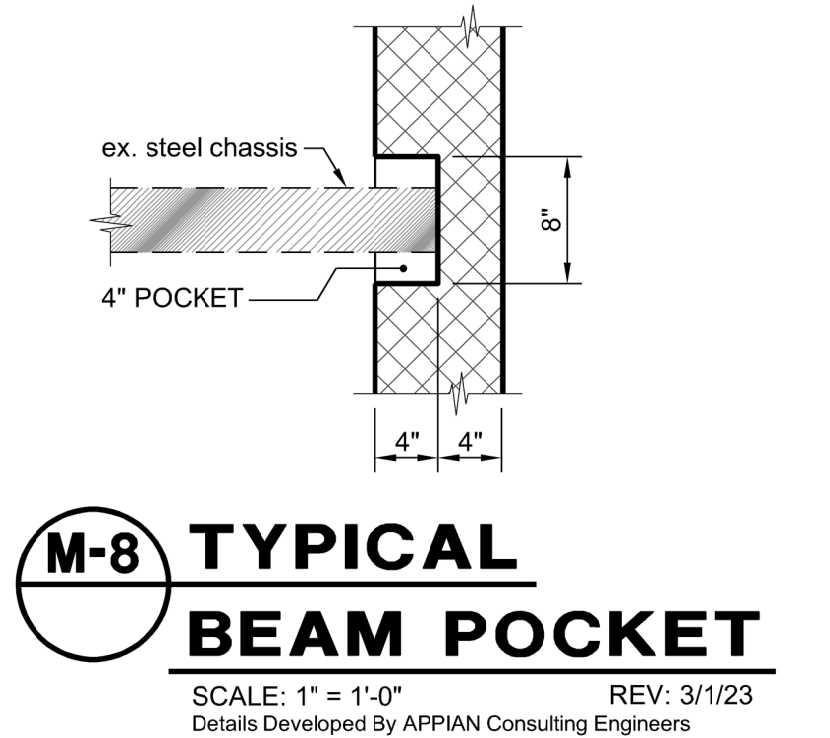
107 1/4" THK. BENT GUSSET
 NOT TO SCALE (30° ANGLE)
 Details Developed By APPIAN Consulting Engineers
 DATE: 1/16/23



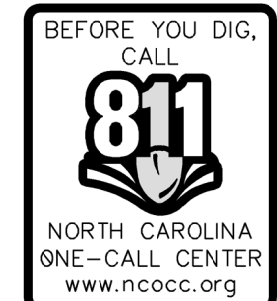
M-5 FOUNDATION WALL BRACING DETAIL
 NOT TO SCALE
 Details Developed By APPIAN Consulting Engineers
 DATE: 1/16/23



M-6 CHASSIS BEARING AT END WALLS
 NOT TO SCALE
 Details Developed By APPIAN Consulting Engineers
 DATE: 1/16/23



M-8 TYPICAL BEAM POCKET
 SCALE: 1" = 1'-0"
 REV: 3/1/23
 Details Developed By APPIAN Consulting Engineers



CONSTRUCTION SAFETY
 These drawings do not contain the requirements for job safety. All provisions for safety shall be the sole responsibility of the contractor.

EXISTING CONDITIONS:
 The contractor shall be responsible for reviewing all existing job conditions. Any adverse existing conditions affecting work shown on these drawings shall be brought to the attention of the engineer for possible clarification or reconciliation.

ADA AND LEGAL DISCLAIMER
 This document is not represented to comply with all requirements contained in the ADA or other laws. Engineers are not licensed to interpret laws or give advice concerning laws, the owner should have this document reviewed by his attorney to determine legal compliance.

SUPPORT DETAILS	
M-1 A	CHASSIS TIE-DOWN (PIERS)
M-1 B	ALTERNATE CHASSIS TIE-DOWN DETAIL
S-1	WOOD FRAME PERIMETER WALL SECTION

NOTE:
 IF OWNER OPTS FOR GARAGE PARKING, 5/8" TYPE X FIRE RATED DRYWALL WILL BE REQUIRED (AT HOMEOWNER EXPENSE) VIA CHANGE ORDER.

NO.	DATE	DESCRIPTION
1	01/16/23	ISSUED FOR PERMIT
2	01/16/23	ISSUED FOR CONSTRUCTION
3	01/16/23	ISSUED FOR CONSTRUCTION
4	01/16/23	ISSUED FOR CONSTRUCTION
5	01/16/23	ISSUED FOR CONSTRUCTION
6	01/16/23	ISSUED FOR CONSTRUCTION
7	01/16/23	ISSUED FOR CONSTRUCTION
8	01/16/23	ISSUED FOR CONSTRUCTION
9	01/16/23	ISSUED FOR CONSTRUCTION
10	01/16/23	ISSUED FOR CONSTRUCTION

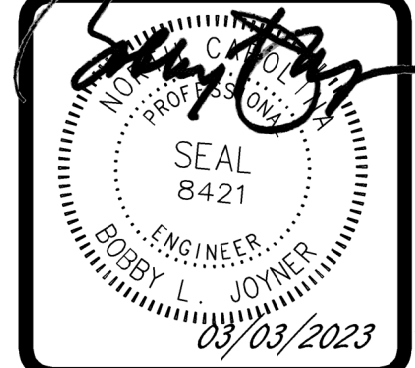


CONSULTING ENGINEERS, P.A.
 CIVIL, MUNICIPAL &
 STRUCTURAL ENGINEERS
 COMPREHENSIVE
 ENVIRONMENTAL SERVICES
 BLN = C0562

154 Roundabout Ct.
 Rocky Mount, N.C. 27804
 Phone: (252) 972-7703
 Fax: (252) 972-7638

www.applanengineers.com
 admin@applanengineers.com

Final Drawings
 Review Purposes ONLY



CONSTRUCTION DETAILS
 (HC 2202) 617 Crabtree Road
 Belhaven, N.C. 27810
 Hyde County

22-089
 D-0000
 HC2202-E