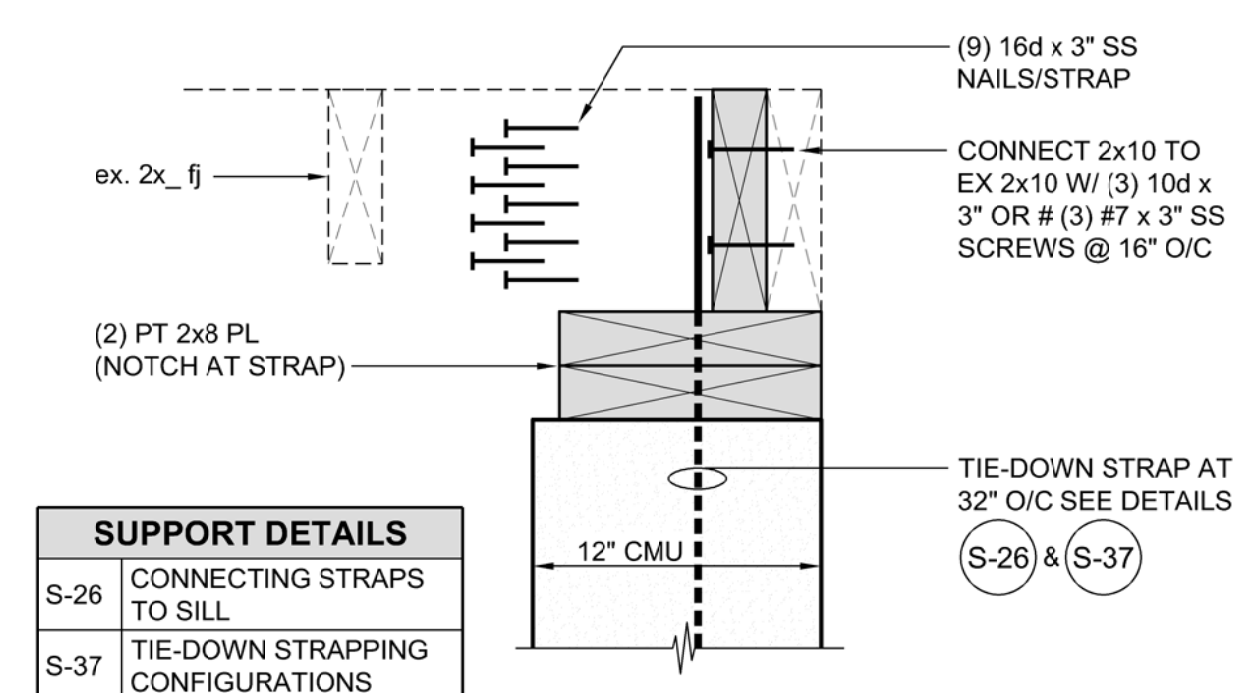


BLOW UP
NOT TO SCALE

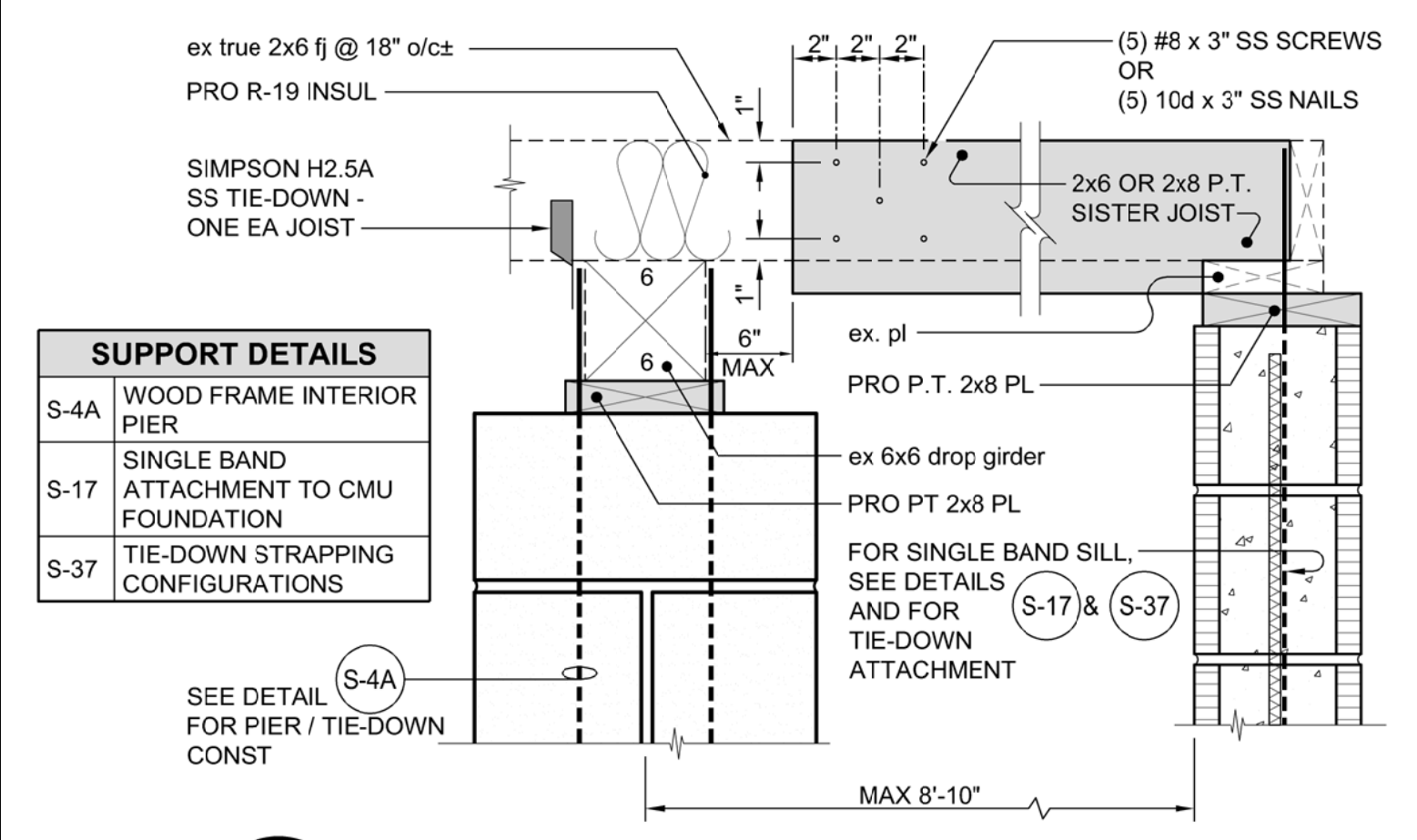
- NOTES:**
1. Verify dimensions and torque with manufacturer.
 2. Alternate manufacturer must be approved by engineer.
 3. Do not under insert bars. Shove to center stop. If center stop is missing, measure and mark the rebar for one-half of the coupler length before inserting it into coupler.
 4. Use a 3/4" impact wrench and a socket ("S" in chart). Tighten the twist-off screws starting at the end of the coupler and working your way toward middle. Do not use an open-ended or adjustable wrench!
 5. Do not use couplers for rebar larger or smaller than the intended bar size!
 6. Coupler are to be based on use of ASTM A615/ A706, Grade 60 bar.

Rebar Size	Approx. Coupler Length "L" (in.)	1/2 Coupler Length "L/2" (in.)	# of Screws Per Bar	Socket Size "S"	Average Screw Twist-Off Torque "T" (ft-lb)	Min. Impact Wrench Torque Rating (ft-lb)
#4	5"	2 1/2"	2	1/2"	60	250
#5	7"	3 1/2"	3	1/2"	60	250
#6	9"	4 1/2"	4	1/2"	60	250
#7	10 3/4"	5 3/8"	4	5/8"	105	500
#8	13"	6 1/2"	5	5/8"	105	500
#9	13 3/4"	6 7/8"	4	3/4"	215	750
#10	16 1/2"	8 1/4"	5	3/4"	215	750
#11	19"	9 1/2"	6	3/4"	215	750

S-42 ZAP SCREWLOCK SPLICE DETAIL
NOT TO SCALE
Details Developed By APPIAN Consulting Engineers
DATE: 6-16-16



S-45 SINGLE BAND ATTACHMENT (JOISTS PARALLEL TO BAND)
NOT TO SCALE
Details Developed By APPIAN Consulting Engineers
DATE: 4-8-16



S-46 SECTION SHOWING ACCEPTABLE SISTER JOIST ATTACHMENT
SCALE: 1 1/2" = 1'-0"
Details Developed By APPIAN Consulting Engineers
DATE: 7-31-18

REV. NO.	DATE	DESCRIPTION	BY	CHK
1	NOVEMBER, 2022			



CONSULTING ENGINEERS, P.A.
CIVIL, MUNICIPAL & STRUCTURAL ENGINEERS
COMPREHENSIVE ENVIRONMENTAL SERVICES
BLN = C0562
154 Roundabout Ct.
Rocky Mount, N.C. 27804
Phone: (252) 972-7703
Fax: (252) 972-7638
www.applanengineers.com
admin@applanengineers.com

Final Drawings
Review Purposes ONLY



STANDARD DETAILS For Hyde County N.C. Flood Mitigation Assistance Grant 5161-004